

## Margaret Champernounge Townsend [5A23]



Two views of Glandore Harbour





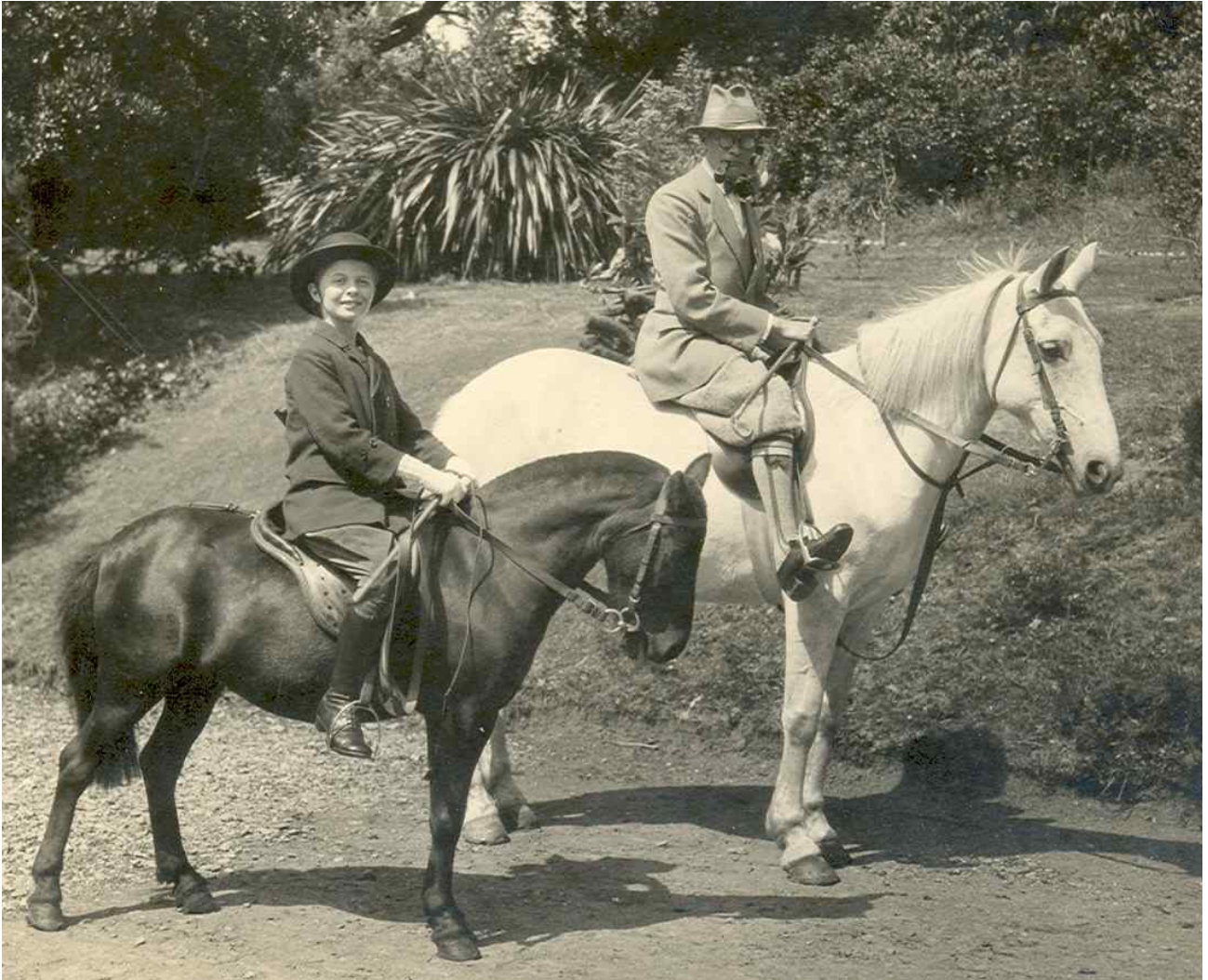


**The house (Seamark) in which Margaret and Anthony lived can be seen in the left middle distance**

**Margaret as a young girl**



**Margaret with her Father Pa Willy [5A10]**



**Margaret and her husband Anthony ca 1940**





**Castletownshend and St Barrahan's Church 1990**



**The Main Street**





**The Castle 1998**



**The harbour**



**GLANDORE**, a small but rising village, in the parish of KILFAUGHNABEG, Western Division of the barony of EAST CARBERY, county of CORK, and province of MUNSTER, 3 miles (S. W.) from Rossscarbery; containing about 200 inhabitants. This seems to have been a place of some importance at an early period, as appears from the erection of the castles of Glandore and Kilfinnan; for many years it continued in a very impoverished state, but it has again become a place of considerable note through the spirited exertions of its present proprietor, J. Redmond Barry, Esq., who has within the last few years expended upwards of £10,000 in various improvements. It is situated on the eastern side of Glandore harbour, which affords secure anchorage to vessels of large size; and is navigable to Leap, a village on the Cork and Skibbereen mail road. The scenery at the entrance of the harbour is extremely picturesque, and is remarkable as having formed the subject, of a Latin poem, called "*Carberiae Rupes*," written by Dean Swift, who spent some time in the neighbourhood. A pier has been recently constructed near the village, which affords protection to about 20 fishing yawls of three tons each; fish of every kind is abundant in the bay. Many elegant houses and a comfortable hotel have been erected, and from the beauty of its situation and the salubrity of the climate, the village has become a favourite place of residence, and much frequented during the bathing season; baths have been erected and every accommodation afforded for the convenience of visitors. The principal residences are Glandore Castle, the seat of P. Morris, Esq.; Glandore House, of J. Redmond Barry, Esq.; Glandore Cottage, of JFH. Townsend (*John FitzHenry Townsend [250]*), Esq.; Glandore Lodge, of R. Adams, Esq.; Stone Hall, of Major T. Allen; Westview House, of Major Edw. Allen; Chateau Maria, of F. Allen, Esq.; Kilfinnan Castle, of T. Raneland, Esq.; Prospect House, of John Morris, Esq.; Glenville, of Capt. E. Hart; Union Cottage, of Mrs. Donovan; and Cliff Cottage, of the Rev. Mr. Walker. A temporary church and the R. C. chapel for the parish of Kilfaughnabeg are in the village. A school-house capable of containing 600 children has been lately erected by Mr. Barry, with the aid of the National Board of Education; the boys receive instruction in agriculture and trades from competent teachers, and a model farm and carpenters' workshop are connected with it. The management of the girls' school reflects the highest credit on Miss Adams, the acting patroness, who most benevolently devotes her time to its superintendence: an infants' school has also been established.