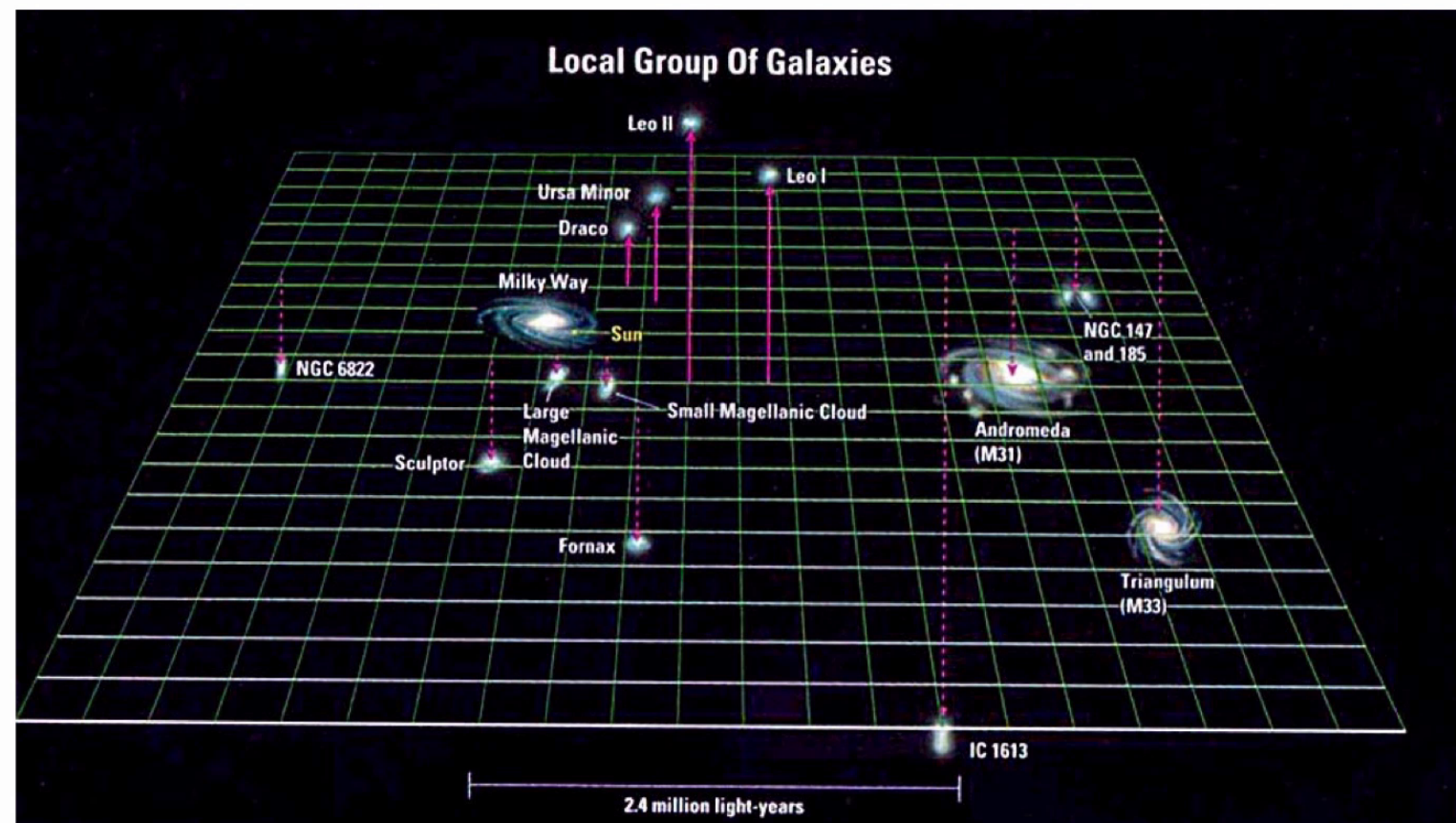
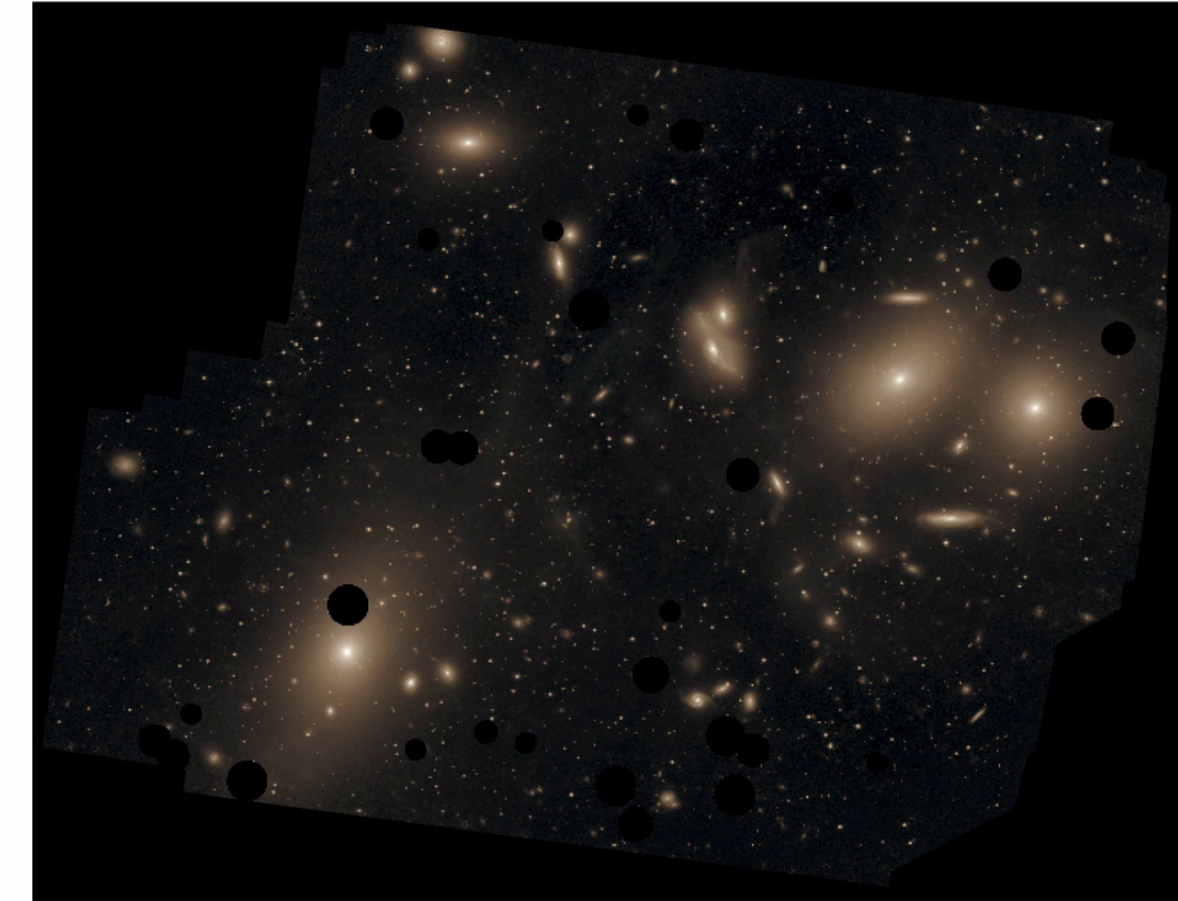


# The Distribution of Galaxies in Space

- 1 Our Milky Way is part of the Local Group of galaxies: 3 spirals, 2 intermediate ellipticals, and many dwarf ellipticals and irregular galaxies.



- 2 Galaxy clusters are bigger assemblages of galaxies than groups. The Virgo Cluster is a nearby rich cluster containing thousands of galaxies.



- 3 Together, the Local Group and Virgo cluster are part of a larger supercluster. Superclusters are filamentary concentrations of galaxy groups & clusters, surrounded by large voids

