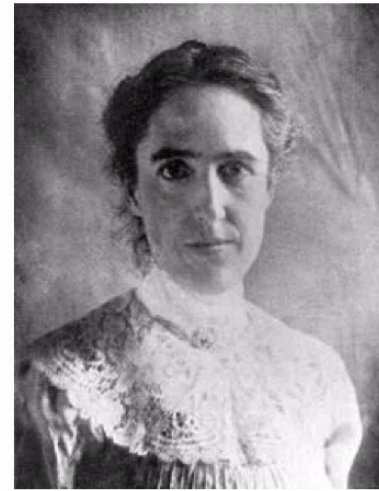


Distances to Galaxies

1

Henrietta Swan Leavitt:
measure the period of
Cepheid variables to find
their intrinsic luminosity

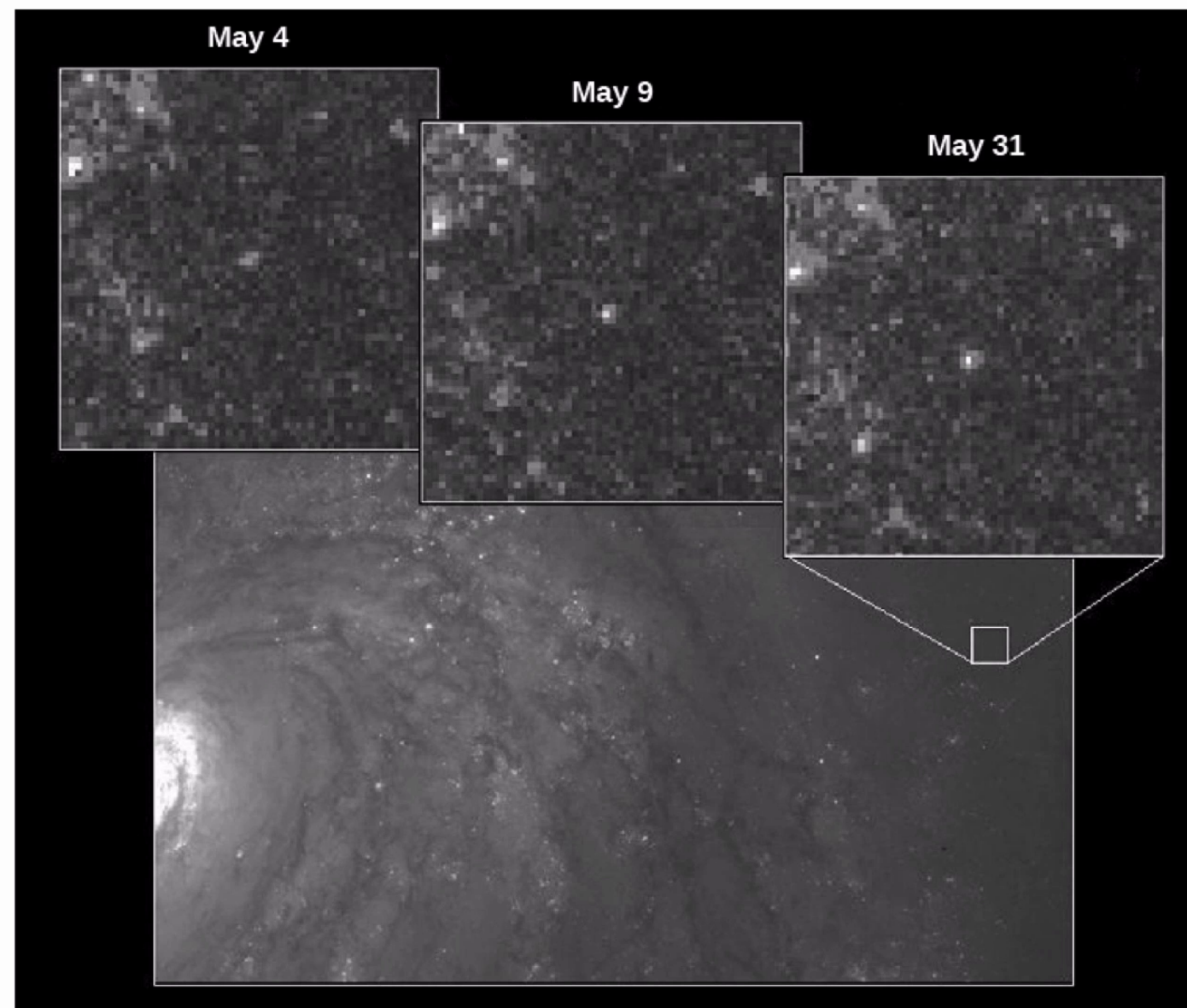


2

Edwin Hubble:
use Cepheids as
standard bulb



Cepheid in M100 galaxy



3

To go to much greater distances, use Type Ia supernovae (exploding white dwarfs)



Supernova in M101 Galaxy (Pinwheel)

4

Can also use Tully-Fisher relation:
intrinsic luminosity of
spiral galaxy scales
with its rotation rate

