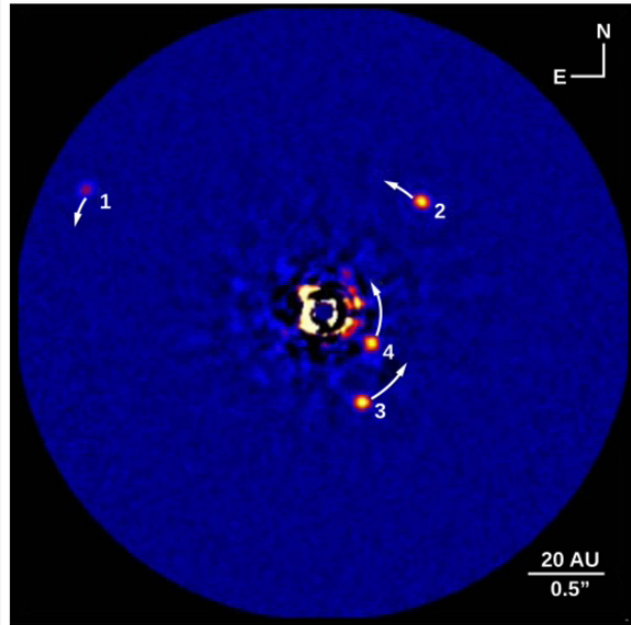


1 Direct Imaging

Detecting Exoplanets

3 Doppler Shift - Wobbling Stars



Hard to do...

2 Transit Method

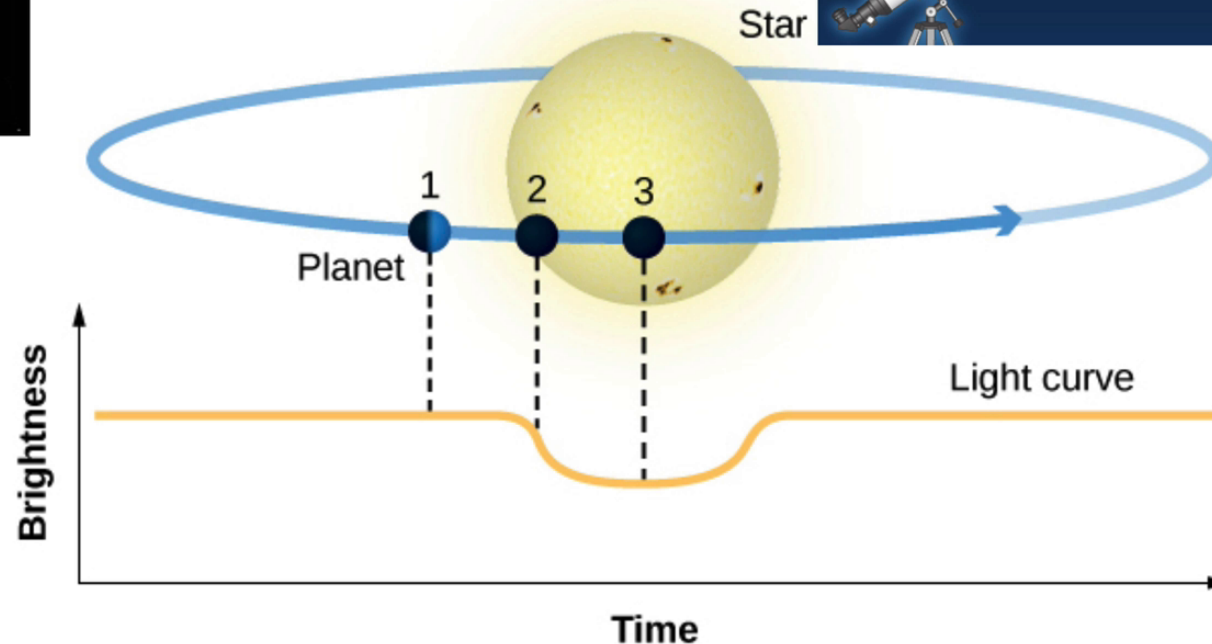
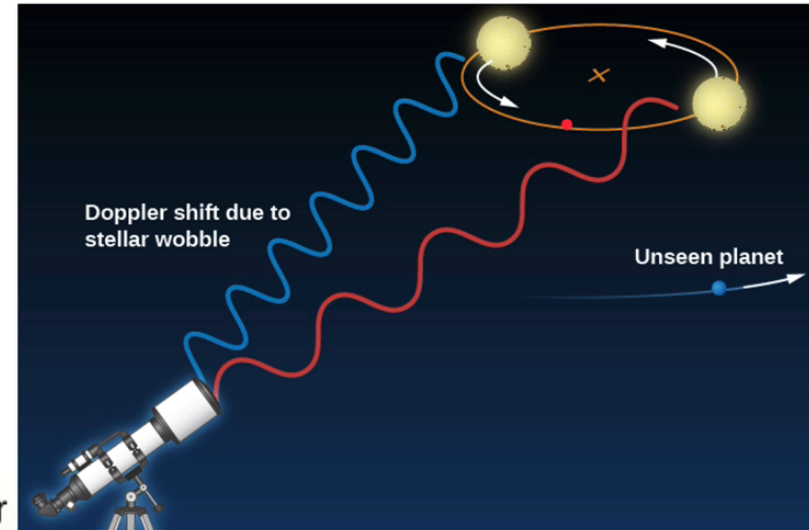
Planet passes in front of Star

Makes star appear dimmer

Kepler's Law -> Star and Planet orbit around Center of Mass

Causes Star to "wobble"

Measure wobble with Doppler Effect



Change in Brightness tells us about size of planet